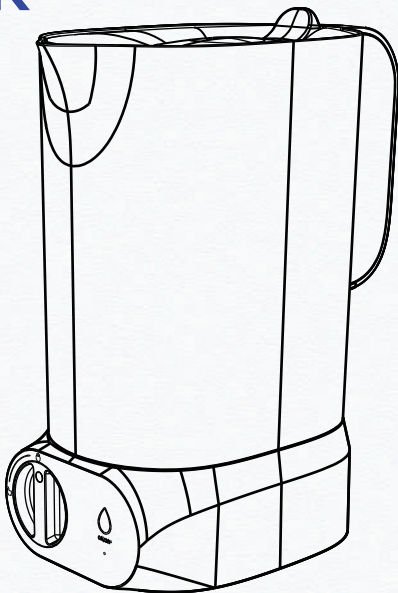




Product model: DP01

User Manual

AUTOMATIC WATER FILTER PITCHER



SPECIFICATIONS

| | |
|------------------------|-------------|
| Case Material | ABS, AS, PP |
| Rated Flow Rate | 500ml/min |
| Total Volume | 2.7L |
| Raw Water | Tap Water |
| Water Temperature | 5-38 °C |
| Rated Voltage/Current | 5V-2A |
| Battery Capacity | 2200mAh |
| Battery Charging Cycle | 2 month |

Note:

To achieve the optimal performance, it is highly recommended to use the system under the operational parameters.

The battery life was tested under the room temperature and 15 cups (3.5L) usage per day. There may be differences in the results due to variations in usage frequency and environmental temperature.

COMPONENTS

Faucet

Hose

Adaptor

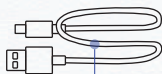
Lid

<Water Pitcher>

Mesh

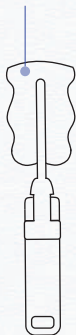
Raw
Water (1.2L)

Filtered
Water (1.5L)



USB Cable

Brush



<Filter>

Dust Cover

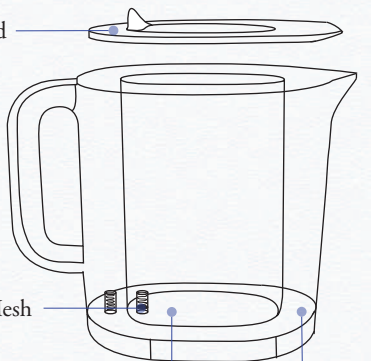
Valve

Charging
Port

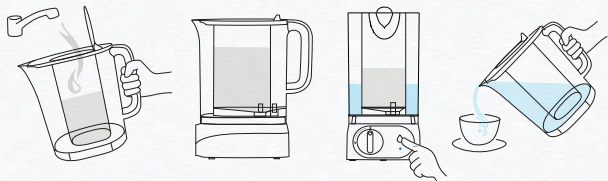
Button

<Base>

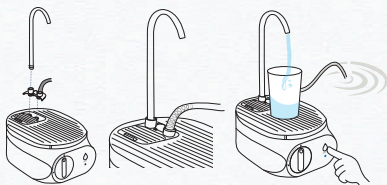
LED
Indicator



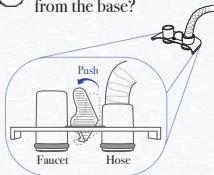
WATER PITCHER MODE



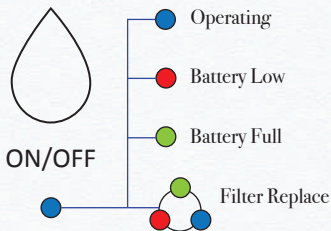
CONTINUOUS MODE



? How to remove adaptor from the base?



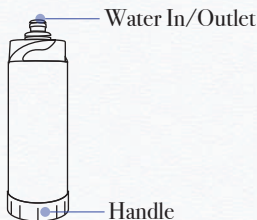
LED MANUAL



⚠ Note:

For pump overload protection, system will automatically **stop after 5 minutes** of continuous operation.

FILTER

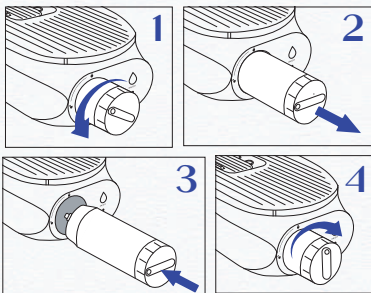


| | |
|-------------|---------------|
| Material | ABS, PP, EPDM |
| Size (D*L) | 46*142(mm) |
| Filter Life | 500L |

Note:

The filter life may vary due to the water quality and the usage environment in different locations.

FILTER REPLACEMENT



Note:

After replacing the filter, hold the manual button for **5 seconds to reset** the overall filtration time.

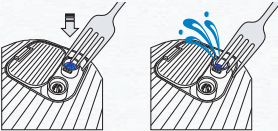
Note:

On your first use or after filter replacement, **make sure to discard the first tank of filtered water.**

PRECAUTIONS

- This product is not intended for commercial use. It is designed for home use only.
- Before use, check if the water pitcher and base are tightly attached.
- Do not operate if the water pitcher is separated from the base, as it may cause malfunction by increasing internal pressure.
- To prevent bacterial growth, please use the purified water as soon as possible.
- Before using the water purifier, make sure to drain any remaining water to prevent overflow.
- Close the dust cover when the water pitcher is not on the base.
- If the product is not used for more than 3 days, it is recommended to remove the filter from the base and store it in the refrigerator.
- If the product is not used for an extended period, please charge it at least once every 3 months to prevent battery performance degradation.
- Use a separate filter for outdoor use.
- Please charge the product by using a 5V – 2A power adaptor.
- Prevent water from entering the bottom of the base, as it may cause serious malfunctions.
- When replacing the filter, the water remained inside the filter may flow out.
- If the filter has not been replaced for a long time, please rotate it firmly, as it may be difficult to replace due to internal adhesion.
- Place it in a dry place away from direct sunlight.

FAQ

| ISSUE | SOLUTION |
|---|---|
| What should I do when the button does <u>NOT</u> light up? | <ul style="list-style-type: none">• Try connecting the built-in charging cable to check if the battery is charged.• Try drying the product before use. |
| What should I do if the product is running but <u>NO</u> water flows in or out? | <ul style="list-style-type: none">• Ensure that the water pitcher is tightly attached to the base.• Try removing the filter and press the base valve to release the air inside the base.  |
| What should I do when the flow rate has <u>decreased</u> ? | <ul style="list-style-type: none">• If the flow rate of the filtration has decreased, the filter may be clogged or there may be an issue with the water flow mechanism.• Try cleaning or replacing the filter to improve the flow rate. |
| What should I do if the <u>taste</u> of the water changes? | <ul style="list-style-type: none">• Replace the filter.• Check if the raw water meets the standard working conditions |

WARRANTY

- The product comes with a one-year warranty. The warranty covers defects in materials and workmanship from the original date of purchase. During the warranty period, we will replace or repair parts that fail due to defects or improper use after delivery. The cost of repair or replacement under excluded circumstances shall be borne by the consumer. This limited warranty does not cover the following items: filters and all other parts or components that require regular replacement as a result of ordinary usage. This limited warranty only applies if the product is installed, used, and maintained in compliance with all instructions and requirements enclosed with the product.
- The limited warranty shall only be valid if:
 - Working conditions are 1-38 °C.
 - The feed water must have a pH between 6.5 and 8.5.
 - Turbidity must be less than 1.0 SDI.
 - The hardness of feed water must be less than 300 ppm.
- This limited warranty shall be void if:
 - The cartridge filters are not replaced on the recommended maintenance schedule.
 - The product is purchased from someone other than our official website or our authorized dealers, as we cannot verify or guarantee the integrity or authenticity of the product.
- Our sole obligation under this warranty shall be the repair or replacement of a non-conforming product or parts of this product, or at our option, the return of the product and a refund of the purchase price. Our obligation does not include the cost of transportation. We are not responsible for damage in transit, and claims for such damage should be presented to the carrier by the customer.



sunny@kortech.cn



www.sflux.co.kr

If you encounter any further issues,
please contact us immediately.

We are here to help!



KORTECH KOREA CO., LTD.